

Adler Bio- und Wassertechnik

Bestwig/Germany

Biological pipe cleaning

Biological pipe cleaning

The advantages

» **Pipings**

Lipolyt® 2000 has been developed for all pipe materials.

» **Deposits**

Lipolyt® 2000 prevents incrustations or decomposes existing incrustations.
therefore the danger of blockages is reduced considerably.
therefore the pipe ventilation is improved, which reduces possible odour problems.

» **Sulphuric acid**

Lipolyt® 2000 reduces drastically the danger of corrosion due to biogenic sulphuric acid, which is caused by organic materials

» **Pipe cleaning**

Lipolyt® 2000 is the alternative to expensive pipe cleaning which might damage the pipe materials



Biological pipe cleaning can be used both as a preventive measure in new pipelines and for pipe cleansing in older pipelines.

Biological pipe cleaning

The way it works

Lipolyt® 2000 for biological pipe cleaning consists of two components, which are introduced into the pipe system one after the other.

Component 1 of this biological pipe cleaning medium is a mixture of fatty acid esters, sebatic salts and free fatty acids. With its oily, viscous consistence, this component moistens the complete inside of the pipe and works itself into existing incrustations. There it serves as an adhesion base and a nutritive source for the second component.

Component 2 consists of micro organisms and enzymes, the active part of the biological pipe cleaning. The enzymes decompose fats, carbohydrates and proteins of organic materials into small fragments, which serve as an energy source for the micro organisms. The decomposition is aerobic, the by-products are nothing but carbon dioxide and water. The micro organisms reproduce very fast and displace other already existing, in part even detrimental organisms.



« Microscope image
of Bacillus spores



« Colonies of Bacillus
on an Agar plate



Biological pipe cleaning can be used both as a preventive measure in new pipelines and for pipe cleansing in older pipelines.

Biological pipe cleaning

What else is to be considered

After pipe clearing with Lipolyt® 2000, other pipe clearing agents containing chloride should not be used, as these kill the micro organisms. For the toilet we recommend biological detergents, otherwise no negative effects of detergents are known. New cultures should be introduced in certain intervals to ensure permanent pipe clearing.

For humans, animals and plants Lipolyt® 2000 is absolutely unrisky. The biodegradability has been tested and confirmed as per the OECD regulation 301D.



Biological pipe cleaning can be used both as a preventive measure in new pipelines and for pipe cleansing in older pipelines.

Biological pipe cleaning

The application field

Lipolyt® 2000 is suitable for pipe cleansing for all waste waters with organic

components, for example pipe cleansing for kitchen and toilet waste water. We recommend Lipolyt® 2000 for pipe cleansing in private houses, hospitals, residential care homes, hotels, gastronomy, public buildings and ships.

In this field of application extensively exist aerobic living conditions for the microbes we use. Through this we already obtained long-term effects with clearly exceed 10 years .



Biological pipe cleaning can be used both as a preventive measure in new pipelines and for pipe cleansing in older pipelines.

Biological pipe cleaning

The application method

One set of Lipolyt® 2000 consists of 1000 ml of component 1 and 1000 g of component 2.

Component 1 is to be mixed with 12l of warm water and distributed to all drains or inspection openings so that a maximum of 25 m of pipeline are wetted. After that flush with 2.5 l of warm water. In case of pipelines over 25 m length, the first set is applied to the lowest drain or inspection opening in flow direction.



Component 1 is to be mixed with 12l of warm water



Component 1 distributed to all drains

Afterwards, component 2 is to be stirred into 12l of warm water. After one hour of soaking, the mixture is distributed into the same drains or inspection openings as component 1 beforehand. Afterwards flush with 3 l of warm water.

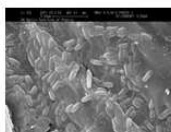


Component 2 is to be stirred into 12l of warm water



Component 2 distributed into the same drains as component 1 beforehand

In case of down pipes the upper storeys ought to be treated on or two days later.



Adler Bio- und Wassertechnik

Biological pipe cleaning can be used both as a preventive measure in new pipelines and for pipe cleansing in older pipelines.

Biological pipe cleaning

Dosage



One set, consisting of 1000ml component 1 (left hand side) and 1000g component 2 (right hand side), are sufficient for 25m of pipeline length.



Biological pipe cleaning can be used both as a preventive measure in new pipelines and for pipe cleansing in older pipelines.